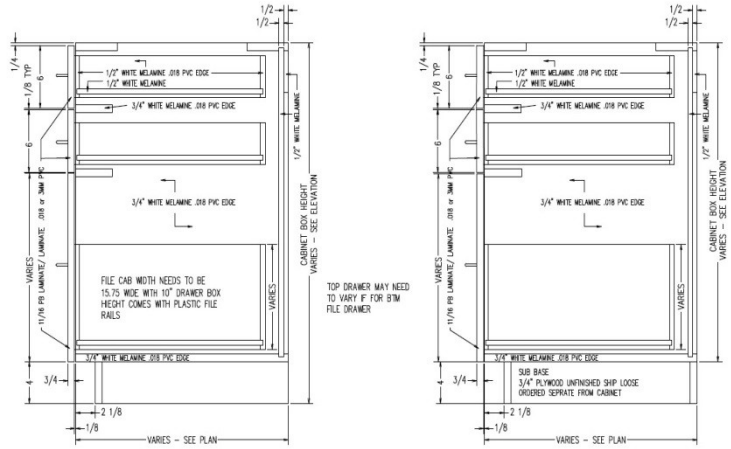




### B0D3D-2



Base 3 drawer cabinet,  
top two drawers 6"



TYPICAL B0D3D-2  
INTEGRAL TOE KICK

TYPICAL B0D3D-2  
FOR SUB BASE

Laminate cabinets are available in a wide range of standard features and options. Additionally, custom configurations are possible. The website supports many of the features needed to quote and order commercial grade laminate or melamine products. The best value is made available by selecting from the standard features listed below (Default settings in the configurator)

**Standard door**

None

**Standard Sizes**

Width ranges 9" to 30"  
Height ranges 18" to 42"  
Depth ranges 9" to 30"

**Standard features**

Unfinished Sides – 3/4" white melamine  
Finished Sides - 3/4" HPL exterior, white liner interior  
Unfinished bottom - 3/4" white melamine  
Unfinished top stretchers - 3/4" white melamine  
Unfinished back – 1/2" white melamine (Dado in sides)  
Unfinished shelves - None  
Unfinished shelves – None  
Drawer front – 3/4" HPL exterior, white liner interior  
Cabinet edgeband - .018 PVC  
Drawer front edgeband – .018 PVC or 3mm PVC  
Drawer Box – 1/2" white melamine

**Standard Hardware**

Hinges – None  
Drawer Slide – FR5000 Fullerter full extension ball bearing (100 lb.)  
Pull – 4" satin chrome wire pull  
Shelf Clips – None

**Standard Options**

Finished ends – 3/4" HPL exterior, white liner interior

**Custom Options**

Sub-Bases – 3/4" plywood construction (Cabinets have a flush bottom, sub bases ordered separately)  
Locks – Choice of lock and key options  
Finished Interiors – 3/4" HPL interiors with either white liner exterior or matching HPL exteriors, determined by finished end selection.

**Accessory Options**

See Accessory list which include Hardware, Components and Operations.