

## B1D-SINK

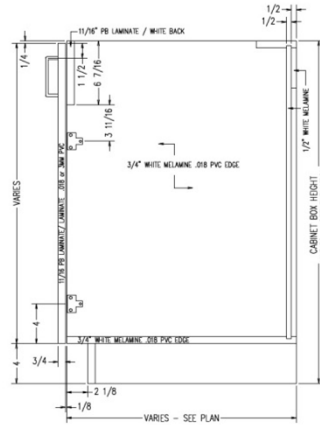


Left Hand Hinge

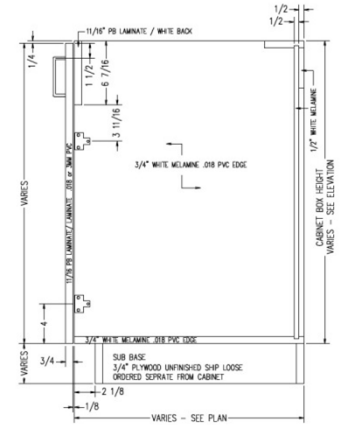


Right Hand Hinge

Base 1 door cabinet  
with false front behind door



TYPICAL B1D-SINK  
INTEGRAL TOE KICK  
SCALE: 1-1/2" = 1'-0"



TYPICAL B1D-SINK  
FOR SUB BASE  
SCALE: 1-1/2" = 1'-0"

Laminate cabinets are available in a wide range of standard features and options. Additionally, custom configurations are possible. The website supports many of the features needed to quote and order commercial grade laminate or melamine products. The best value is made available by selecting from the standard features listed below (Default settings in the configurator)

### Standard door

Left hand hinge  
Right hand hinge

### Standard Sizes

Width ranges 9" to 27"  
Height ranges 18" to 42"  
Depth ranges 9" to 30"

### Standard features

Unfinished Sides – 3/4" white melamine  
Finished Sides - 3/4" HPL exterior, white liner interior  
Unfinished bottom - 3/4" white melamine  
Unfinished top stretchers - 3/4" white melamine  
Unfinished back – 1/2" white melamine (Dado in sides)  
Unfinished shelves - 3/4" white melamine (Less than 27" wide)  
Unfinished shelves – 1" white melamine (27" and wider)  
Doors – 3/4" HPL exterior, white liner interior  
Cabinet edgeband - .018 PVC  
Door edgeband – .018 PVC or 3mm PVC

### Standard Hardware

Hinges – 120 degree Blum Hinge  
Pull – 4" satin chrome wire pull  
Shelf Clips – 5mm metal spoon

### Standard Options

Finished ends – 3/4" HPL exterior, white liner interior

### Custom Options

Sub-Bases – 3/4" plywood construction (Cabinets have a flush bottom, sub bases ordered separately)  
Locks – Choice of lock and key options  
Finished Interiors – 3/4" HPL interiors with either white liner exterior or matching HPL exteriors, determined by finished end selection.

### Accessory Options

See Accessory list which include Hardware, Components and Operations.