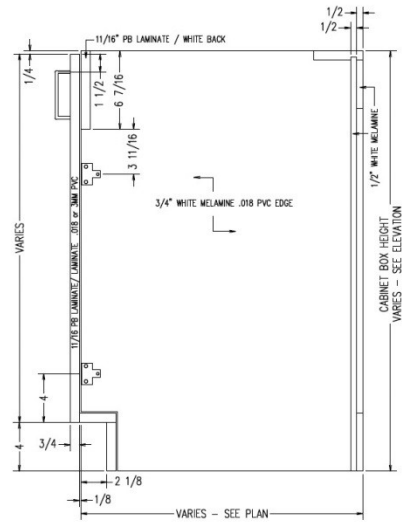




## B2D-ATK



Base 2 door cabinet  
with false front behind door, no  
bottom, attach toe kick



TYPICAL B2D-ATK AND B1D-ATK

SCALE: 1-1/2" = 1'-0"

Laminate cabinets are available in a wide range of standard features and options. Additionally, custom configurations are possible. The website supports many of the features needed to quote and order commercial grade laminate or melamine products. The best value is made available by selecting from the standard features listed below (Default settings in the configurator)

### Standard door

Pair Hinges

### Standard Sizes

Width ranges 18" to 39"

Height ranges 18" to 42"

Depth ranges 9" to 30"

### Standard features

Unfinished Sides – 3/4" white melamine

Finished Sides - 3/4" HPL exterior, white liner interior

Unfinished bottom - None

Unfinished top stretchers - 3/4" white melamine

Unfinished back – 1/2" white melamine (Dado in sides)

Unfinished shelves - 3/4" white melamine (Less than 27" wide)

Unfinished shelves – 1" white melamine (27" and wider)

Doors – 3/4" HPL exterior, white liner interior

Cabinet edgeband - .018 PVC

Door edgeband – .018 PVC or 3mm PVC

### Standard Hardware

Hinges – 120 degree Blum Hinge

Pull – 4" satin chrome wire pull

Shelf Clips – 5mm metal spoon

### Standard Options

Finished ends – 3/4" HPL exterior, white liner interior

### Custom Options

Sub-Bases – None

Locks – Choice of lock and key options

Finished Interiors – 3/4" HPL interiors with either white liner exterior or matching HPL exteriors, determined by finished end selection.

### Accessory Options

See Accessory list which include Hardware, Components and Operations.