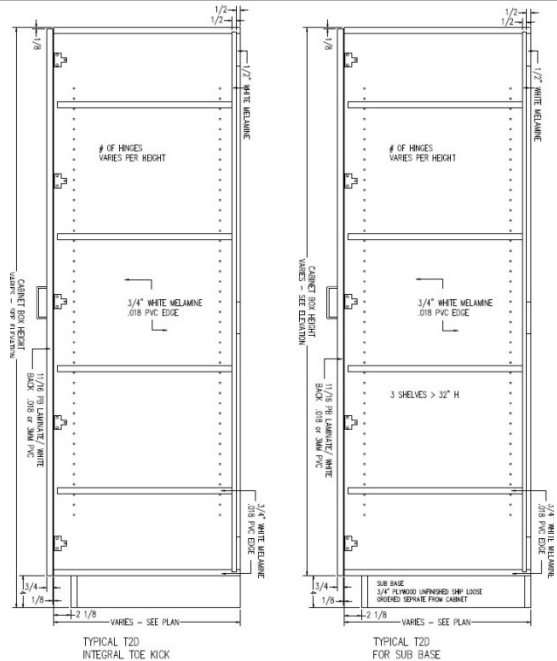




## T2D-WDB



Tall 2 door cabinet, fixed divider, hanging area on left with closet rod, adjustable shelf area on right.



Laminate cabinets are available in a wide range of standard features and options. Additionally, custom configurations are possible. The website supports many of the features needed to quote and order commercial grade laminate or melamine products. The best value is made available by selecting from the standard features listed below (Default settings in the configurator)

### Standard door

Pair Hinges

### Standard Sizes

Width ranges 30" to 39"

Height ranges 42" to 96"

Depth ranges 9" to 30"

### Standard features

Unfinished Sides – 3/4" white melamine

Finished Sides - 3/4" HPL exterior, white liner interior

Unfinished divider - 3/4" white melamine

Unfinished fixed shelf - 3/4" white melamine

Unfinished bottom - 3/4" white melamine

Unfinished top stretchers - 3/4" white melamine

Unfinished back – 1/2" white melamine (Dado in sides)

Unfinished shelves - 3/4" white melamine (Less than 27" wide)

Unfinished shelves – 1" white melamine (27" and wider)

Doors – 3/4" HPL exterior, white liner interior

Cabinet edgeband - .018 PVC

Door edgeband – .018 PVC or 3mm PVC

### Standard Hardware

Hinges – 120 degree Blum Hinge

Pull – 4" satin chrome wire pull

Shelf Clips – 5mm metal spoon

Closet rod and flanges

### Standard Options

Finished ends – 3/4" HPL exterior, white liner interior

### Custom Options

Sub-Bases – 3/4" plywood construction (Cabinets have a flush bottom, sub bases ordered separately)

Locks – Choice of lock and key options

Finished Interiors – 3/4" HPL interiors with either white liner exterior or matching HPL exteriors, determined by finished end selection.

### Accessory Options

See Accessory list which include Hardware, Components and Operations.