

## W1D-CORNER

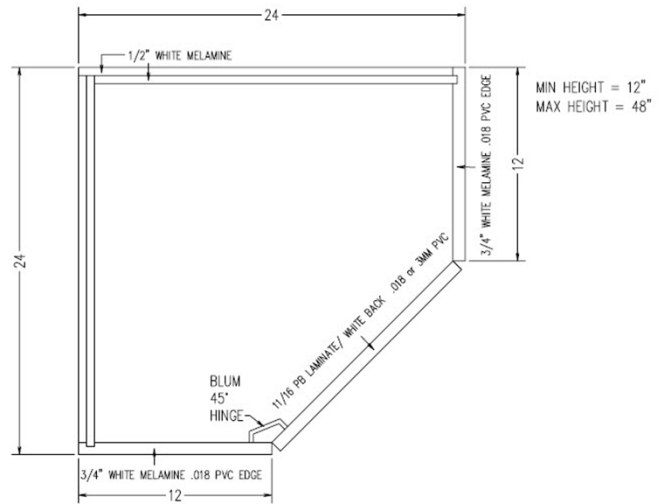


Left Hand Hinge



Right Hand Hinge

Single door wall cabinet with  
45 degree door  
for corner application



TYPICAL W1D-CORNER

SCALE: 1-1/2" = 1'-0"

Laminate cabinets are available in a wide range of standard features and options. Additionally, custom configurations are possible. The website supports many of the features needed to quote and order commercial grade laminate or melamine products. The best value is made available by selecting from the standard features listed below (Default settings in the configurator)

### Standard door

Left hand hinge  
Right hand hinge

### Standard Sizes

Width ranges 24" to 30" (Cabinet depths will be adjusted to match adjoining cabinets)  
Height ranges 12" to 48"  
Depth ranges 24" to 30" (Cabinet depths will be adjusted to match adjoining cabinets)

### Standard features

Unfinished Sides – 3/4" white melamine  
Finished Sides - 3/4" HPL exterior, white liner interior  
Finished bottom - 3/4" HPL exterior, white liner interior  
Unfinished top - 3/4" white melamine  
Unfinished back – 1/2" white melamine (Dado in sides)  
Unfinished shelves - 3/4" white melamine (Less than 27" wide)  
Unfinished shelves – 1" white melamine (27" and wider)  
Doors – 3/4" HPL exterior, white liner interior  
Cabinet edgeband - .018 PVC  
Door edgeband – .018 PVC or 3mm PVC

### Standard Hardware

Hinges – 120 degree Blum Hinge (45 degree corner hinge)  
Pull – 4" satin chrome wire pull  
Shelf Clips – 5mm metal spoon

### Standard Options

Finished ends – 3/4" HPL exterior, white liner interior  
Light Rails – 3/4" HPL strip, shipped loose for field installation. (Light rail butts finished ends. Cabinet Height does not include the height of the light rail)

### Custom Options

Hang rails – 3/4" plywood "French Cleats". Wall cleat shipped loose for field installation.  
Locks – Choice of lock and key options  
Finished Interiors – 3/4" HPL interiors with either white liner exterior or matching HPL exteriors, determined by finished end selection.

### Accessory Options

See Accessory list which include Hardware, Components and Operations.