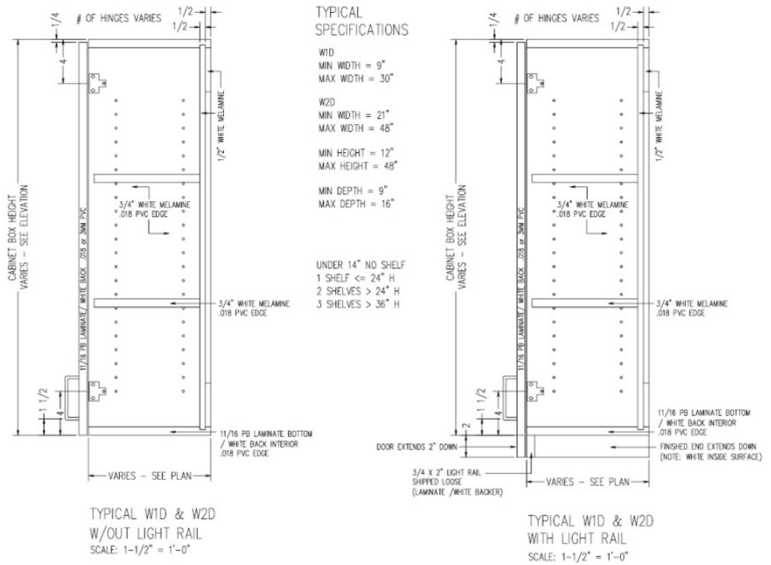


## W2D



Double door wall cabinet



Laminate cabinets are available in a wide range of standard features and options. Additionally, custom configurations are possible. The website supports many of the features needed to quote and order commercial grade laminate or melamine products. The best value is made available by selecting from the standard features listed below (Default settings in the configurator)

**Standard door**

Hinged in Pairs

**Standard Sizes**

Width ranges 18" to 42"  
Height ranges 12" to 48"  
Depth ranges 9" to 24"

**Standard features**

Unfinished Sides – 3/4" white melamine  
Finished Sides - 3/4" HPL exterior, white liner interior  
Finished bottom - 3/4" HPL exterior, white liner interior  
Unfinished top - 3/4" white melamine  
Unfinished back – 1/2" white melamine (Dado in sides)  
Unfinished shelves - 3/4" white melamine (Less than 27" wide)  
Unfinished shelves – 1" white melamine (27" and wider)  
Doors – 3/4" HPL exterior, white liner interior  
Cabinet edgeband - .018 PVC  
Door edgeband – .018 PVC or 3mm PVC

**Standard Hardware**

Hinges – 120 degree Blum Hinge  
Pull – 4" satin chrome wire pull  
Shelf Clips – 5mm metal spoon

**Standard Options**

Finished ends – 3/4" HPL exterior, white liner interior  
Light Rails – 3/4" HPL strip, shipped loose for field installation. (Light rail butts finished ends. Cabinet Height does not include the height of the light rail)

**Custom Options**

Hang rails – 3/4" plywood "French Cleats". Wall cleat shipped loose for field installation.  
Locks – Choice of lock and key options  
Finished Interiors – 3/4" HPL interiors with either white liner exterior or matching HPL exteriors, determined by finished end selection.

**Accessory Options**

See Accessory list which include Hardware, Components and Operations.